

How Secure Is Your Infrastructure?

O CIA A F E



O CIA A F E Consortium Members

Oklahoma
CareerTech

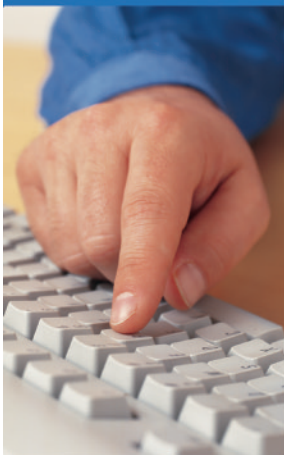
Oklahoma City
Community
College

OSU-Okmulgee

Rose State
College

Tulsa Community
College

University of
Tulsa



What's the purpose of the Cyber Security Internship program? To advance Oklahoma's homeland security strategies, allow students to gain practical work experience, and help develop a highly trained security workforce.

Why should our company sponsor an intern? The O CIA A F E consortium has been awarded a prestigious Advanced Technology Education (ATE) Center designation by the National Science Foundation. This means your company will get a quality intern who can help you with cyber security—one that you may want to hire permanently. And by providing an internship to a deserving student, you will also have the incredible opportunity to help build Oklahoma's cyber security workforce.

How can an intern help our organization? Your intern can conduct a security risk analysis, vulnerability assessment, and penetration testing for your company. He/she can interpret, create, and update enterprise security policies and procedures. Your intern can also employ appropriate security tools; design, deploy, harden and secure your voice, data, and wireless networks; and use digital forensics to investigate any illicit activities.

How many interns are available for the 2004-2005 school year? 69

Fall Semester: 5 for the Oklahoma City area and 2 for the Tulsa area.

Spring: 19 in Oklahoma City and 20 in Tulsa. **Summer:** 11 in Oklahoma City and 12 in Tulsa.

When would our intern work, and how much would it cost our company?

An intern would work a 20-hour week for \$10 to \$13 an hour, depending on the skill level of the student. At these wages, it would cost between \$3,200 and \$4,160 to sponsor a 16-week internship.

If we sponsor an intern, what are our responsibilities? You would interview and select your intern, plan the internship experience to provide different learning experiences, supply a mentor to help the intern apply skills, provide both student and school with periodic evaluations, and pay the intern's hourly wage.

Interested? Call Dr. Sheryl Hale, Oklahoma CareerTech, **405-743-5553**.